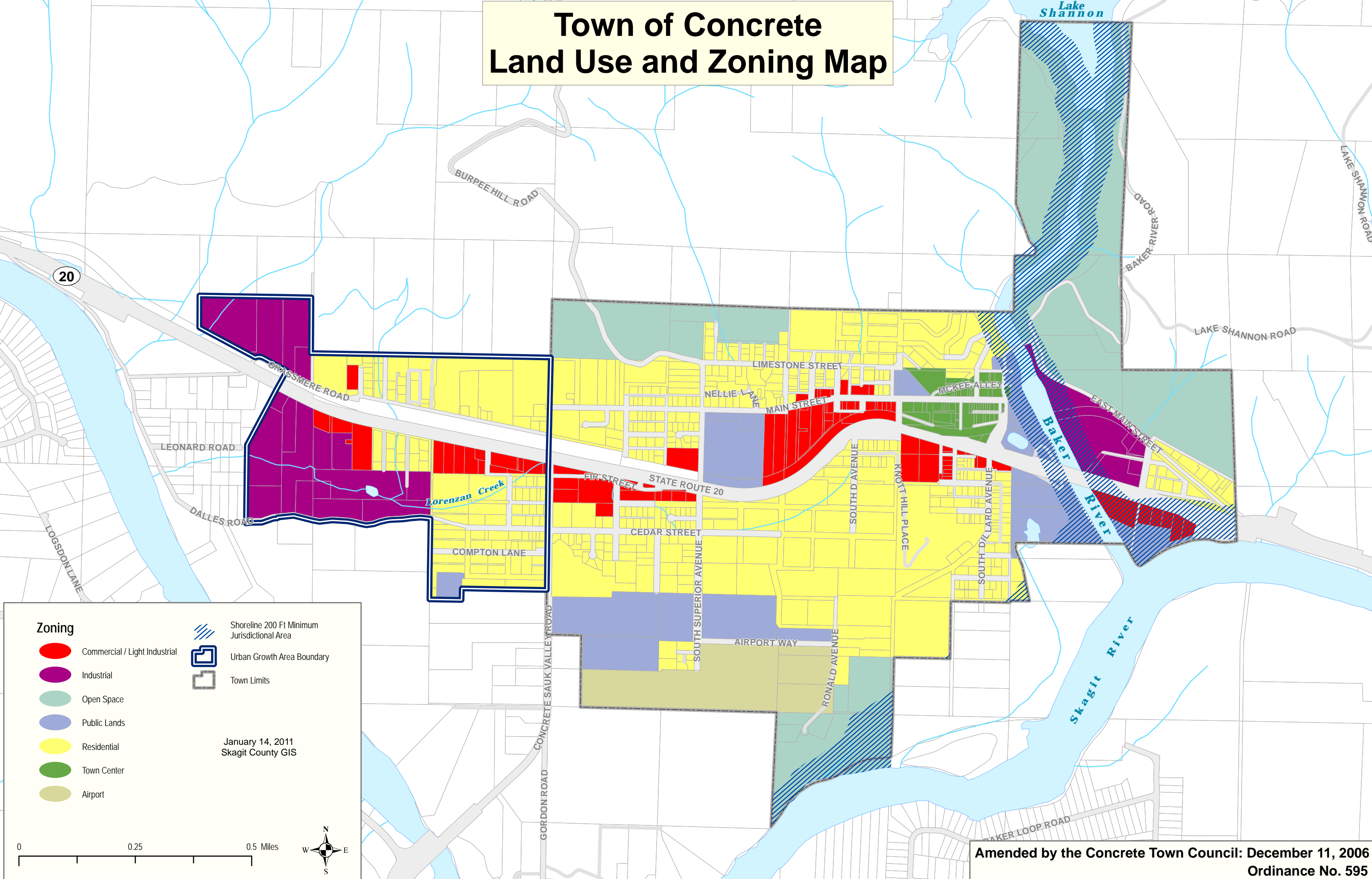


Town of Concrete Land Use and Zoning Map



Zoning

- Commercial / Light Industrial
- Industrial
- Open Space
- Public Lands
- Residential
- Town Center
- Airport

- Shoreline 200 Ft Minimum Jurisdictional Area
- Urban Growth Area Boundary
- Town Limits

January 14, 2011
Skagit County GIS

0 0.25 0.5 Miles



Amended by the Concrete Town Council: December 11, 2006
Ordinance No. 595