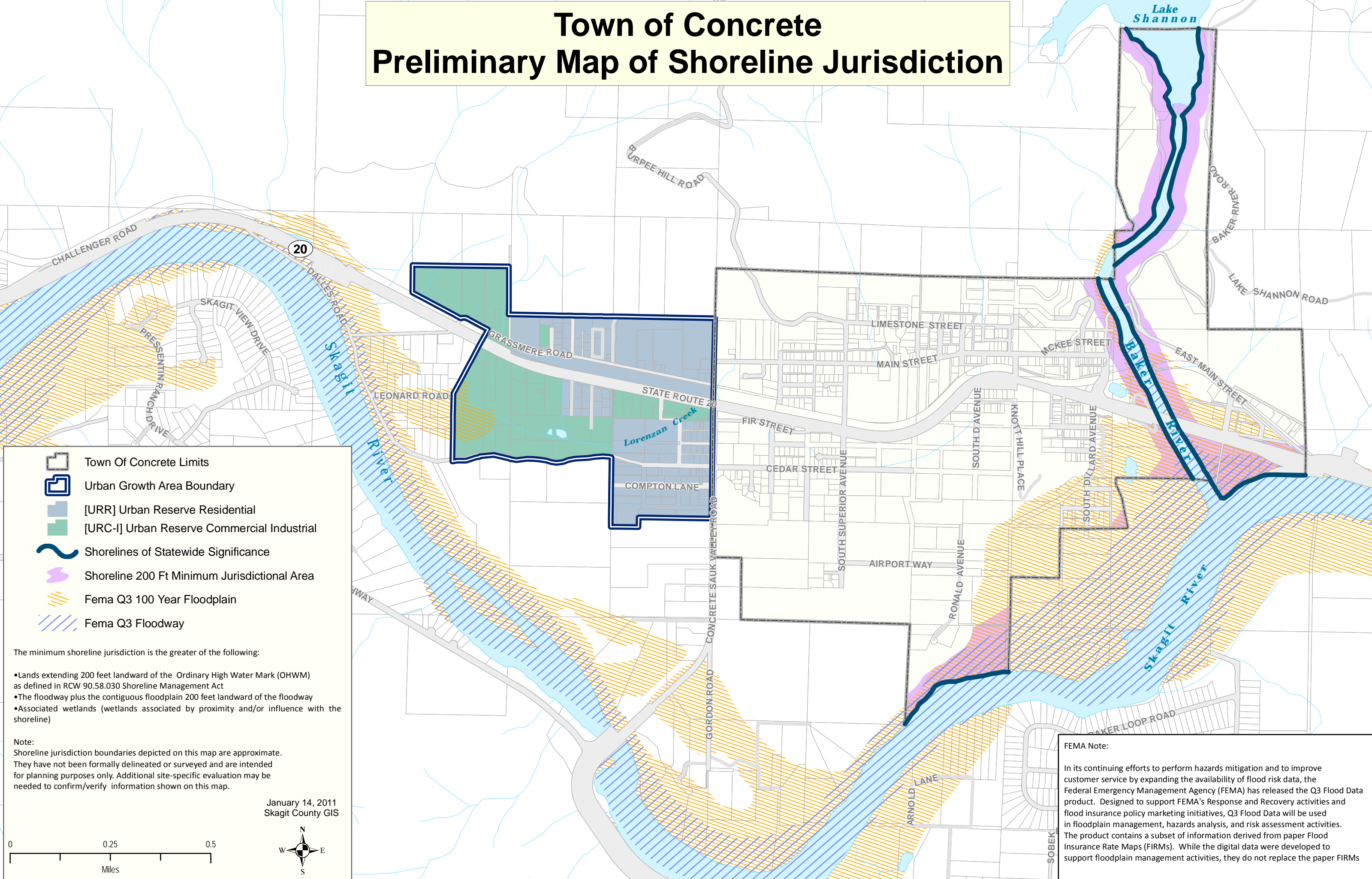


Town of Concrete

Preliminary Map of Shoreline Jurisdiction



- Town Of Concrete Limits
- Urban Growth Area Boundary
- [URR] Urban Reserve Residential
- [URC-I] Urban Reserve Commercial Industrial
- Shorelines of Statewide Significance
- Shoreline 200 Ft Minimum Jurisdictional Area
- Fema Q3 100 Year Floodplain
- Fema Q3 Floodway

The minimum shoreline jurisdiction is the greater of the following:

- Lands extending 200 feet landward of the Ordinary High Water Mark (OHWM) as defined in RCW 90.58.030 Shoreline Management Act
- The floodway plus the contiguous floodplain 200 feet landward of the floodway
- Associated wetlands (wetlands associated by proximity and/or influence with the shoreline)

Note:
Shoreline jurisdiction boundaries depicted on this map are approximate. They have not been formally delineated or surveyed and are intended for planning purposes only. Additional site-specific evaluation may be needed to confirm/verify information shown on this map.

January 14, 2011
Skagit County GIS

FEMA Note:

In its continuing efforts to perform hazards mitigation and to improve customer service by expanding the availability of flood risk data, the Federal Emergency Management Agency (FEMA) has released the Q3 Flood Data product. Designed to support FEMA's Response and Recovery activities and flood insurance policy marketing initiatives, Q3 Flood Data will be used in floodplain management, hazards analysis, and risk assessment activities. The product contains a subset of information derived from paper Flood Insurance Rate Maps (FIRMs). While the digital data were developed to support floodplain management activities, they do not replace the paper FIRMs